

APTANY



Wanli Tire Corporation Limited
Headquarters:
No.3 Wanli Road, Aotou Town, Conghua District, Guangzhou, P.R.China
Marketing Center:
Building C, Vanlead Innovation Park, No.2 Lianhe Road, Shijing Town,
Baiyun District, Guangzhou, P.R.China
E-mail: sales@wandtire.cn

APTANY

2019-2020 TIRE CATALOGUE

Passenger Car, SUV, Light Truck, Winter Tires

WANLI TIRE CORPORATION LIMITED

APTANY

CONTENTS

- 1 COMPANY PROFILE
- 1 MAIN PRODUCTS
- 1 SPORT SERIES
- 1 RUN FLAT SERIES
- 1 COMFORT SERIES
- 1 LIGHT TRUCK SERIES
- 22 SUV/4X4 SERIES-HIT
- 31 SUV/4X4 SERIES-MT
- 31 SUV/4X4 SERIES-MT
- 31 WINTER SERIES
- 11 ALL SEASON SERIES
- 11 TECHNICAL FILE
- 11 TIRE USAGE TIPS
- 11 SPEED SYMBOLS



Company profile

About us

WANLI Tire Co., Ltd. (WANLI), the largest radial tire manufacturer in Southern China, and also the member of Guangdong's Top 100 manufacturer, founded in 1988, with annual production capacity of 20 million tires. WANLI Tire has good reputation among domestic and international markets. Tires are sold worldwide to more than 150 countries and regions. WANLI product also gained widespread recognition of safety production, environmental protection, integrity management, and has won numerous awards. WANLI has been consistently among the top 50 tire companies in the world, and the export business among the top 10 in China for several years. WANLI is the first Chinese manufacturer to produce run-flat and UHP tires. WANLI is the first drafting research Institute for National Standards of the People's Republic of China GB/T 30196 - Self-supporting run flat tires). WANLI is also the first Chinese tire manufacturer to acquire the certificate from world's leading testing organization - German Rhine TÜV Test.

Strength

WANLI owns its Research Institute with the name of Wanli tire & rubber research institute, which includes National Enterprise Technical Center, CNAS, Postdoctoral programme, Guangdong Academician & Expert Workstation, Guangdong Engineering Technological Research & Development Center. WANLI also has a great research team, with doctoral engineers, master engineers, senior engineers, and external experts from Korea, Japan, which includes ability on CAD, FEM, NVH, VDR and tire experiment. Meanwhile WANLI owns the world-leading experimental machine Six-component Test (USA MTS) and High Speed Uniformity Test (Germany ZF). With excellent R&D strength, WANLI is able to guarantee delivery of best quality tires.

OE Market

In the OE market, WANLI tire is the first Chinese tire brand supplying OE tire to GAC Honda. Besides, WANLI tire has been providing OE tire to more than 28 automobile factories including Dongfeng Citroen/Peugeot, Zhengzhou Nissan, GAC Trumpchi and GAC Honda, with more than 80 passenger car models.

Product

"WANLI", "SUNNY", "APTANY" are three tire brands we are selling at overseas market. We constantly develop and enrich the product line including PCR, Racing tire, UHP, HT, AT, MT, LT, Run Flat tire, Winter tire, and all Season tire with more than 6,000 tire sizes which can meet all requirements from different markets. Our major products incorporate pattern designs including Comfort series H220, Sports series SA302, SUV series AS028, etc.

Green Factory

WANLI is entitled with "Green Factory" by Ministry of Industry and Information Technology of the People's Republic of China. We Committed to the more environmental protection, safer, sustain and more efficient way to produce tires and develop business.

Target

In the future, WANLI will keep on putting large investment on research and development(R&D), manufacture, brand marketing, sales and so on, as an attempt to achieve trinity on Global R&D, Global production and Global marketing. While enlarging and strengthening Guangzhou headquarters base, WANLI aims to broaden its internationalization territory, and set a new model for innovated development of state-owned company.



MAIN PRODUCTS



ULTRA HIGH PERFORMANCE



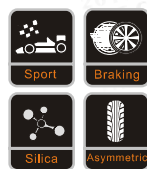
SPORT SERIES

RA301 SPORTmacro

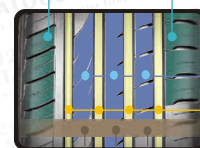


RA301

SPORTmacro



16-20 Inch
Speed rating: H-W
30-55 Series
UTQG: 320AA



Asymmetric pattern design with different pitch size, number and sorting between outside and inside, reduces noise and provides excellent performance on handling and comfort.

Three ribs design provides excellent handling stability; many small steel sipes partially cut off rib, which reduce stiffness of rib and ensure outstanding handling and comfort performance.

Four wide longitudinal straight grooves with good capability of quick water drainage ensure excellent safety performance on wet road.

The tread formula adopts higher content of white carbon black compound design to ensure Stronger grip and safety performance of tires with handling stability enhanced.

RA301					SPORTmacro	
Size	Load index & speed Rating	Std. Rim	Section width (mm)	Overall diameter (mm)	Max Air pressure (Kpa)	Load capacity (kg)
195/50R16	88/XLH	6J	201	602	280	560
225/50R16	92V	7J	233	632	250	630
195/45R16	84/XLV	6 1/2J	195	582	280	500
205/45ZR16	87/XLV	7J	206	590	290	545
215/55ZR17	98/XLV	7J	226	668	290	750
225/55ZR17	101/XLV	7J	233	680	290	825
235/55R17	103/XLV	7 1/2J	245	690	290	875
205/50ZR17	93/XLV	6 1/2J	214	638	290	650
215/50ZR17	95/XLV	7J	226	648	290	690
225/50ZR17	98/XLV	7J	233	658	290	750
235/50ZR17	100/XLV	7 1/2J	245	668	250	710
205/45ZR17	88/XLV	7J	206	616	290	560
215/45ZR17	91/XLV	7J	213	626	290	615
225/45ZR17	94/XLV	7 1/2J	225	634	290	670
235/45ZR17	97/XLV	8J	236	644	290	730
245/45ZR17	95W	8J	243	652	250	690

To be continued.....



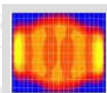
RA603

SPORTmacro

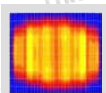
NEW PATTERN DESIGN

Directional pattern design decreases rolling resistance, ensures excellent drainage and gives better control in high speed driving.

The coordination of 3D groove and lateral pattern splits water film on the ground, enhances braking on wet grounds as well as wet grip and lateral support, which ensures stable turning and control.



Finite element result before optimization



Finite element result after optimization

LOWER NOISE LEVEL

Well distributed pattern pitch with narrow grooves helps to disperse and reduce noise by 5% compared with the last generation.

REMARKABLE CONTROL ON DRY AND WET GROUNDS

Through finite element analysis software and optimization of pressure distribution on the contact surface, excellent grip and control on wet and dry grounds is guaranteed in high speed driving. The four grooves provide fast drainage, ensures good grip and control on wet grounds.

RA603

SPORTmacro

Size	Load index & speed Rating	Std. Rim	Section width (mm)	Overall diameter (mm)	Max Air pressure (Kpa)	Load capacity (kg)
265/60R18	114/XL H	8J	272	775	290	1180
255/55R18	109/XL V	8J	265	737	290	1030
255/50R18	106/XL V	8J	265	713	290	950
255/40R18	99/XL W	9J	260	661	290	775
275/35R18	95 W	9.5J	278	649	250	690
265/45R22	109/XL V	9J	266	787	290	1030

★235/40R18, 265/35R18, NEW PRODUCT AVAILABLE IN 2019

TOP-LEVEL PROTECTION, AND DRIVING HOME SAFELY



NEW



RUN FLAT SERIES

RA302 SPORTmacro



RA302 SPORTmacro

APTANYsidewall support enhancement technology can keep a vehicle driving for a certain distance at a certain speed after tire pressure is lost, (when the pressure is reduced to 0.9Pa, under a normal usage condition, the vehicle can drive for a distance between 80 km to 150 km at a speed of less than 80km/h).



Inner tread Asymmetrical tread design Outer tread

Narrow contact area Large contact area

[Product Features]

APTANYsidewall support enhancement technology

It uses computer simulation system, and adopts advanced sidewall structure preventing deformation to increase anti-pressure performance of sidewall to the maximum, so that tire deformation caused by internal beaton and reaction due to air leakage of punctured tire can be effectively resisted.

OPT technology (APTANY sidewall support enhancement technology)

It uses computer simulation system, and adopts advanced sidewall structure preventing deformation to increase anti-pressure performance of sidewall to the maximum, so that tire deformation caused by internal beaton and reaction due to air leakage of punctured tire can be effectively resisted.

Optimized Tire Head Part Design

Optimally designed tire head part can optimize the stress distribution between tire and rim, so as to effectively avoid the unscating problem after a tire is lost.

Special Sidewall Materials

Originally creative rubber materials with excellent heat resistance are used to provide sufficient rigidity for sidewalls of tires, so as to prevent loss of vehicle control caused by pressure loss after a tire was punctured.

DYNAMIC CONTROL

Narrow longitudinal tread provides increased contact surface area.

Good cornering capabilities with excellent control on dry surface.

WATER EVACUATION TREAD


Center staggered height on central tread enhances wet grip.

Internal tread allows for enhanced water dispersion.

The sidewall using the advanced and not deformed technology can extremely enhance the compression properties, and can effectively resist the deforming from the inside traction caused by all four tires leaking.

Size	Load index & speed Rating	Std. Rim	Section width (mm)	Overall diameter (mm)	Max Air pressure (Kpa)	Load capacity (kg)
195/55RF16	87V	6J	201	620	250	545
205/55RF16	91V	6 1/2J	214	632	250	615
225/55ZRF17	97W	7J	233	680	250	730
235/55ZRF17	99W	7 1/2J	245	690	250	775
205/50ZRF17	89W	6 1/2J	214	638	250	580
225/50ZRF17	94W	7J	233	658	250	670
205/45ZRF17	84W	7J	206	616	250	500
225/45ZRF17	91W	7 1/2J	225	634	250	615
215/55ZRF18	95V	7J	226	693	250	690
235/55ZRF18	100V	7 1/2J	245	715	250	800
225/50RF18	95V	7J	233	683	250	690
245/50ZRF18	100W	7 1/2J	253	703	250	800
225/45ZRF18	91W	7 1/2J	225	659	250	615
245/45ZRF18	96W	8J	243	677	250	710
255/40ZRF18	95W	9J	260	661	250	690
255/50RF19	103V	8J	265	739	250	875
245/45ZRF19	98W	8J	243	703	250	750
275/40RF19	101W	9 1/2J	278	703	250	825

NEW QUIET STANDARDS, NEW FIELD OF DRIVING AND RIDING



COMFORT SERIES

RP203 HARMONIC

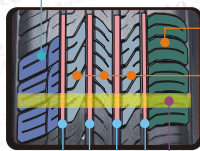


RP203/RP203A

HARMONIC



12-16 Inch
Speed rating: T-V
50-80 Series
UTQG: 420AA



The soft tread favors ride comfort and wet performance.

Closed outside groove design can reduce air resonance effect of side grooves and the main grooves, reducing noise to some extent. The high rigidity of the outer tread provides good handling.

Many steel tread grooves and ribs on a certain extent, enhance the softness of the tread to improve comfort performance, while enhancing wet land drainage performance.

Four wide longitudinal straight grooves with capability of quick water drainage effectively improve handling stability on wet road.

Tread formula design: Specialized new tread compound formula ensures better handling, lower rolling resistance as well as shorter braking distance on dry/wet road.

RP203A

HARMONIC

Size	Load index & speed Rating	Std. Rim	Section width (mm)	Overall diameter (mm)	Max Air pressure (Kpa)	Load capacity (kg)
145/80R12	74T	4J/4.00B	145	537	240	375
145/70R12	69T	4J/J/4.50B	150	509	250	325
155/70R12	73T	4J/J/4.50B	157	523	250	365
135/80R13	70T	3.50B/3 1/2 J	133	546	240	335
145/80R13	75T	4J/4.00B	145	562	240	387
155/80R13	79T	4.50B/4 1/4 J	157	578	240	437
155/70R13	75T	4.50B/4 1/4 J	157	548	250	387
155/65R13	73T	4.50B/4 1/4 J	157	532	250	365
155/65R14	75T	4 1/2 J	157	558	250	387

RP203

HARMONIC

Size	Load index & speed Rating	Std. Rim	Section width (mm)	Overall diameter (mm)	Max Air pressure (Kpa)	Load capacity (kg)
165/70R12	77T	5.00B/5J	170	537	250	412
165/70R13	79T	5.00B/5J	170	562	250	437
175/70R13	82T	5.00B/5J	177	576	250	475
185/70R13	86H	5.50B/5 1/2 J	189	590	250	530

15-16

To be continued.....

RP203

HARMONIC

Size	Load index & speed Rating	Std. Rim	Section width (mm)	Overall diameter (mm)	Max Air pressure (Kpa)	Load capacity (kg)
165/65R13	77T	5.00B/5J	170	544	250	412
175/60R13	77T	5.00B/5J	177	549	250	412
165/60R14	85T	4 1/2 J	165	620	240	515
165/70R14	81T	5J	170	588	250	462
175/70R14	84T	5J	177	602	250	500
185/70R14	88H	5 1/2 J	189	616	250	560
185/70R14	88T	5 1/2 J	189	616	250	560
195/70R14	91H	6J	201	630	250	615
195/70R14	91T	6J	201	630	250	615
205/70R14	95H	6J	209	644	250	690
165/65R14	79T	5J	170	570	250	437
175/65R14	82T	5J	177	584	290	530
185/65R14	86/XLT	5J	177	584	290	530
185/65R14	86H	5 1/2 J	189	596	250	530
185/60R14	75H	5J	170	554	250	387
185/60R14	82H	5 1/2 J	189	578	250	475
195/60R14	86H	6J	201	590	250	530
165/55R14	72H	5J	170	538	250	355
185/55R14	80H	6J	194	560	250	450
185/80R15	93T	5J	184	677	240	650
215/75R15	100T	6J	216	703	250	800
205/70R15	96H	6J	209	669	250	710
215/70R15	98T	6 1/2 J	221	683	250	750
225/70R15	100H	6 1/2 J	228	697	250	800
165/65R15	81T	5J	170	595	250	462
185/65R15	88H	5 1/2 J	189	621	250	560
195/65R15	91H	6J	201	635	250	615
195/65R15	91V	6J	201	635	250	615
195/65R15	95/XLT	6J	201	635	250	615
205/65R15	94V	6J	209	647	250	670
215/65R15	96H	6 1/2 J	221	661	250	710
175/60R15	81H	5J	177	591	250	462
185/60R15	84H	5 1/2 J	189	603	250	500
195/60R15	88V	6J	201	615	250	560
205/60R15	91V	6J	209	627	250	615
185/55R15	82V	6J	194	585	250	475
195/55R15	85V	6J	201	595	250	515
195/50R15	82V	6J	201	577	250	475
205/65R16	95H	6J	209	672	250	690
215/65R16	98H	6 1/2 J	221	686	250	750
205/60R16	92H	6J	209	652	250	630
215/60R16	95H	6 1/2 J	221	664	250	690
225/60R16	98H	6 1/2 J	228	676	250	750
225/60R16	98V	6 1/2 J	228	676	250	750
195/55R16	91/XLV	6J	201	620	290	615
205/55R16	91V	6 1/2 J	214	632	250	615
215/55R16	97/XLV	7J	226	642	290	730
225/55R16	99/XLV	7J	233	654	290	775
195/50R16	88/XLV	6J	201	602	290	560

EXCELLENT BEARING, AND MORE ENJOYMENT BY DRIVING

APTANY

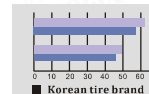
LIGHT TRUCK SERIES

RL106 TRACFORCE

17-18



RL106
TRACFORCE



Wet surface braking
distance/ meter
APTANY:56.25 meters
Korean tire brand:
60.61 meters

Dry surface braking
distance/meter
APTANY:46.17 meters
Korean tire brand:
49.17 meters

RL106		TRACFORCE					
Size	Load Index & Speed Rating	Std. Rim	Section width (mm)	Overall diameter (mm)	Max Air pressure (Kpa)	Load capacity (kg)	PR
15SR13LT	90/88R	4 1/2 J4.50B	157	578	450	680	8/D
16SR13LT	98/88S	4 1/2 J4.50B	165	594	350	580	6/C
15SR13LT	94/93R	4 1/2 J4.50B	165	594	450	670	8/D
17SR13LT	97/95R	5J/5.00B	177	610	450	730	8/D
16S/70R13C	88/86S	5J	170	562	375	560	6/C
16S/70R13LT	88/86S	5J	170	562	375	560	6/C
16SR14LT	96/95T	4 1/2 J2J	165	620	450	710	8/D
16SR14LT	96/95T	4 1/2 J2J	165	620	450	710	8/D
17SR14C	99/98R	5J	178	634	450	775	8/D
17SR14LT	94/92R	5J	177	638	350	670	6/C
18SR14C	102/100R	5 1/2 J	189	650	450	850	8/D
18SR14LT	102/100R	5 1/2 J	189	652	450	850	8/D
19SR14LT	105/103R	5 1/2 J2J	196	668	450	925	8/D
17S/75SR14C	99/98S	5J	177	618	475	775	8/D
17S/75SR14LT	94/91S	5J	177	618	450	670	8/D

To be continued...

RL106				TRACFORCE				
Size	Load index & speed Rating	Std. Rim	Section width (mm)	Overall diameter (mm)	Max Air pressure (Kpa)	Load capacity (kg)	PR	
165/70R14C	89/87R	5J	170	588	375	580	6/C	
175/70R14C	95/93T	5J	177	602	375	690	6/C	
175/70R14LT	95/93T	5J	177	602	375	690	6/C	
175/65R14C	90/88T	5J	177	584	375	600	6/C	
185R15LT	103/102R	5 1/2J	188	674	450	875	8/D	
185R15LT	98/97R	5 1/2J	189	677	350	750	6/C	
195R15LT	106/104R	5 1/2J	198	693	450	950	8/D	
195R15LT	106/104S	5 1/2J	196	693	450	950	8/D	
195/70R15C	104/102R	6J	201	655	450	900	8/D	
195/70R15LT	104/101R	6J	201	655	550	900	10/E	
195/70R15LT	108/105R	6J	201	655	650	1000	12/F	
195/70R15LT	99/96S	6J	201	655	450	775	8/D	
205/70R15C	106/104R	6J	209	669	450	950	8/D	
215/70R15C	106/104S	6 1/2J	221	683	375	950	8/D	
215/70R15C	109/107S	6 1/2J	221	683	450	1030	8/D	
215/70R15LT	104/101R	6 1/2J	221	683	450	900	8/D	
215/70R15LT	104/101S	6 1/2J	221	683	450	900	8/D	
225/70R15C	106/103R	6 1/2J	228	697	450	950	8/D	
225/70R15LT	106/103R	6 1/2J	228	697	450	950	8/D	
235/65R16C	114/111S	6 1/2J	235	806	475	1180	8/D	
235/65R16LT	114/111S	6 1/2J	235	806	450	1180	8/D	
185/75R16LT	104/102R	5J	184	684	475	900	8/D	
185/75R16LT	104/102R	5J	184	684	475	900	8/D	
195/75R16C	110/108T	5 1/2J	196	698	525	1060	10/E	
195/75R16LT	102/99T	5 1/2J	196	698	450	850	8/D	
195/75R16LT	104/101T	5 1/2J	196	698	450	900	8/D	
195/75R16LT	107/103T	5 1/2J	196	698	550	975	10/E	
195/75R16LT	110/108T	5 1/2J	196	698	525	1060	10/E	
215/75R16LT	112/109S	6J	216	728	550	1120	10/E	
225/75R16LT	118/112S	6J	223	744	550	1215	10/E	
225/75R16LT	120/116S	6J	223	744	650	1360	12/F	
195/65R16C	104/102T	6J	201	660	475	900	8/D	
205/65R16LT	107/105R	6J	209	672	475	975	8/D	
235/65R16C	118/113T	7J	240	712	475	1215	8/D	
235/65R16LT	117/114T	7J	240	712	650	1285	12/F	
195/60R16C	99/97H	6J	201	640	375	775	6/C	
215/60R16C	108/106T	6 1/2J	221	664	475	1000	8/D	

★195R15C, 185/70R14LT. NEW PRODUCT AVAILABLE IN 2019



LONGER DURABILITY, FREELY CONTROL



LIGHT TRUCK SERIES

RL108 TRACFORCE



RL108

TRACFORCE



Wet traction



Control



Mileage

12-16 Inch
Speed rating: Q-T
65-85 Series



ANTI-IRREGULAR WEAR AND LONGER TIRE LIFE

By using good durability compound bring longer tire life.
Central straight groove and two Zig-Zag lateral groove provide quick water drainage and enhance great wet safety performance and remarkable anti-irregular wear.

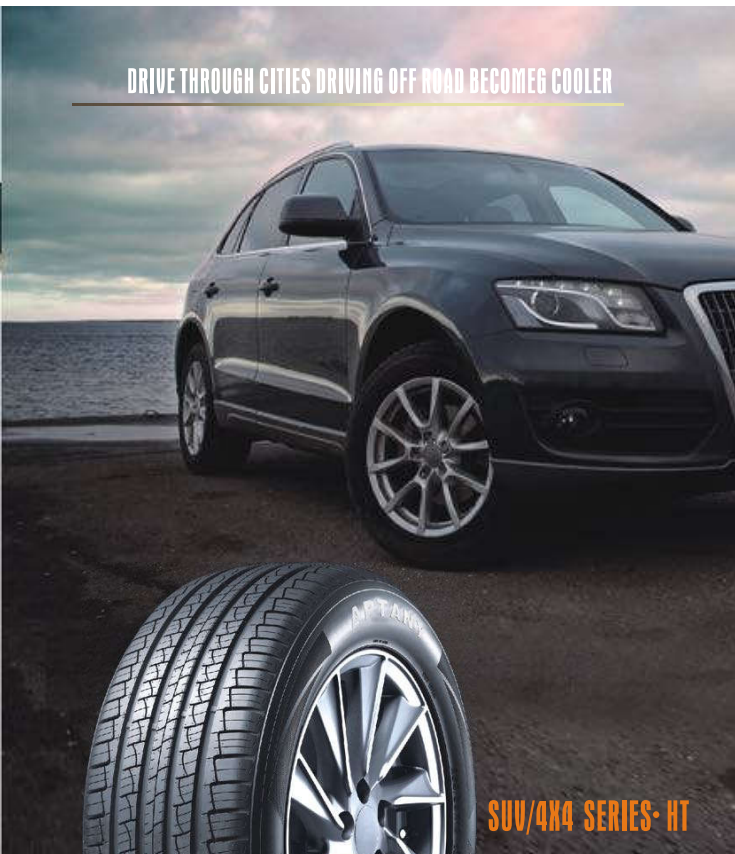
WET SAFETY

Shorter braking distance for safe driving on wet road condition. Improved tread groove enhance water evacuation performance.

EXCELLENT LOAD CAPACITY

Strong tire casing structure provide better load capacity. Closed shoulder pattern design effectively increasing shoulder strength and tread surface contact against road, which benefit for stable handling and durability.

DRIVE THROUGH CITIES DRIVING OFF ROAD BECOMES COOLER



SUV/4X4 SERIES- HT

RU028 FLASH

RL108				TRACFORCE			
Size	Load index & speed Rating	Std. Rim	Section width (mm)	Overall diameter (mm)	Max Air pressure (Kpa)	Load capacity (kg)	PR
145R12LT	80/78Q	4.00B	145	537	350	425	6/C
155R12C	88/86Q	4 1/2	157	550	450	530	8/D
165R13C	91/89R	4 1/2	167	596	375	580	6/C
175/65R14C	90/88T	5J	177	584	375	600	6/C
185R14C	102/100R	5 1/2	188	650	450	800	8/D
195R14C	106/104R	5 1/2	198	666	450	900	8/D
195/70R15C	104/102R	6J	201	655	450	850	8/D
205/70R15C	106/104R	6J	209	669	450	950	8/D
225/70R15C	112/110R	6 1/2	228	697	450	1060	8/D
195R15C	106/104R	5 1/2	198	690	450	900	8/D
185/75R16C	104/102R	5J	184	684	475	850	8/D
195/75R16C	107/105R	5 1/2	196	698	475	925	8/D
215/75R16C	116/114R	6J	216	728	525	1250	10/E
195/65R16C	104/102T	6J	201	660	475	900	8/D
205/65R16C	107/105T	6J	209	672	475	975	8/D



RU028 FLASH



15-20 Inch
Speed rating: T-W
50-75 Series
UTQG: 420AA

Quiet and Comfortable
Tires specially designed for SUV ensure special quietness and comfort when being used on ordinary roads.



Excellent Traction
High density sipe cuts ensure excellent traction on roads and general off-roads.

Good Operation, Control and Braking Performance
The rib design in the middle allows the tires to operate and be controlled in dry and wet conditions, increasing the stability at high speeds and improving braking performance.

Size	Load index & speed Rating	Std. Rim	Section width (mm)	Overall diameter(mm)	Max Air pressure(Kpa)	Load capacity(kg)
225/65R17	102H	61/2J	228	724	250	850
225/65R17	102V	61/2J	228	724	250	850
235/65R17	104V	7J	240	738	250	900
245/65R17	107T	7J	248	750	250	975
245/65R17	111/XLT	7J	248	750	290	1090
265/65R17	112T	8J	272	776	250	1120
215/60R17	98H	61/2J	221	690	250	710
225/60R17	99H	61/2J	228	702	250	775
235/55R17	103/XLV	71/2J	245	690	290	875
275/60R18	116T	8J	279	815	250	1250
225/60R18	100H	61/2J	228	727	250	800
225/60R18	100V	61/2J	228	727	250	800
235/60R18	103H	7J	240	739	250	875
235/60R18	103V	7J	240	739	250	875
255/60R18	112/XLH	75J	260	763	290	1120
265/60R18	114/XLH	8J	272	775	290	1180
215/55R18	99V	7J	226	693	250	690
235/55R18	104/XLV	71/2J	245	715	290	900
255/55R18	109/XLV	8J	265	737	290	1030
245/55R19	101V	71/2J	245	741	250	825
245/55R19	103H	71/2J	253	753	250	875
255/55R20	107V	8J	265	763	250	975
255/50R19	107/XLV	8J	265	739	290	975
265/50R20	110/XLV	81/2J	277	749	290	1060
285/50R20	116/XLV	9J	297	794	290	1250
275/45R20	110/XLV	9J	273	756	290	1060

*265/70R18, 285/60R18, 275/60R20, 285/45R22, NEW PRODUCT AVAILABLE IN 2019

Size	Load index & speed Rating	Std. Rim	Section width (mm)	Overall diameter(mm)	Max Air pressure(Kpa)	Load capacity(kg)
235/75R15	109/XLT	61/2J	235	733	290	1030
245/75R16	111H	7J	248	774	250	1090
215/70R16	100H	61/2J	221	708	250	800
225/70R16	103H	61/2J	228	722	250	875
235/70R16	106T	7J	240	736	250	950
245/70R16	111/XLT	7J	248	750	290	1090
255/70R16	111T	71/2J	260	764	250	1090
265/70R16	112T	8J	272	778	250	1120
275/70R16	114T	8J	279	792	250	1180
215/65R16	98H	61/2J	221	686	250	750
205/60R16	96/XLH	6J	209	652	290	710
215/60R16	99/XLH	61/2J	221	664	290	775
225/60R16	102/XLT	61/2J	228	676	290	850
235/60R16	100H	7J	240	688	250	800
265/70R17	115T	8J	272	804	250	1215

To be continued.....


DRIVE THROUGH CITIES DRIVING OFF ROAD BECOMES COOLER




SUV/4x4 SERIES- HT

RU101/RL101EXPEDITE

25-26




RU101/RL101EXPEDITE




Wet traction



Mileage



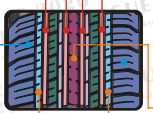
Silica



Comfortable

Semi-closed inner shoulder grooves reduce noise, increasing ground area, optimizing braking performance and avoiding irregular wear.

The ideal thickness of the primer can filter low frequency noise and protect the steel layer from attack, providing a quiet, comfortable performance and a longer longevity.



The low rolling resistance design is for fuel-efficiency and environment-friendly HT tires.

The asymmetric directional tread design provides better comfort and handling performance.

15-20 Inch
Speed rating: H-W
50-85 Series
UTQG: 500AA

RU101				EXPEDITE		
Size	Load index & speed Rating	Std. Rim	Section width (mm)	Overall diameter (mm)	Max Air pressure (kpa)	Load capacity (kg)
235/75R15	109/XLT	6 1/2 J	235	733	290	1030
215/70R16	100T	6 1/2 J	221	708	250	800
225/70R16	103T	6 1/2 J	228	722	250	875
235/70R16	106T	7 J	240	736	250	950
245/70R16	111/XLT	7 J	248	750	290	1090
255/70R16	111T	7 1/2 J	260	764	250	1090
265/70R16	112T	8 J	272	778	250	1120
225/65R16	100T	6 1/2 J	228	698	250	800
235/65R16	103T	7 J	240	712	250	875
235/60R16	100V	7 J	240	688	250	800
245/70R17	110T	7 J	248	776	250	1060
265/70R17	115T	8 J	272	804	250	1215
215/65R17	99T	6 1/2 J	221	712	250	775
225/65R17	102T	6 1/2 J	228	724	250	850
235/65R17	108/XLH	7 J	240	738	290	1000

To be continued.....

RU101				EXPEDITE		
Size	Load index & speed Rating	Std. Rim	Section width (mm)	Overall diameter (mm)	Max Air pressure (kpa)	Load capacity (kg)
245/65R17	107T	7J	248	750	250	975
265/65R17	112T	8J	272	776	250	1120
285/65R17	116T	8½J	292	802	250	1250
215/60R17	96H	6½J	221	690	250	710
225/60R17	99H	6½J	228	702	250	775
235/60R17	102H	7J	240	714	250	850
255/60R17	106T	7½J	260	738	250	950
235/50ZR17	100/XLW	7½J	245	668	250	710
235/50ZR17	96W	7½J	245	668	250	710
255/70R18	113T	7½J	260	815	250	1150
265/70R18	116T	8J	272	829	250	1250
275/70R18	116T	8J	279	843	250	1250
235/65R18	106T	7J	240	763	250	950
275/65R18	116T	8J	279	815	250	1250
225/60R18	100V	6½J	228	727	250	800
225/60R18	104/XLV	6½J	228	727	250	800
235/60R18	107/XLV	7J	240	739	290	975
265/60R18	110H	8J	272	775	250	1060
285/60R18	116H	8½J	292	799	250	1250
225/55R18	98V	7J	233	705	250	750
235/55R18	104/XLV	7½J	245	715	290	900
225/50ZR18	95W	7J	233	683	250	690
235/50ZR18	97W	7½J	245	693	250	730
285/50R20	116/XLV	9J	297	794	290	1250

RL101				EXPEDITE		
Size	Load index & speed Rating	Std. Rim	Section width (mm)	Overall diameter (mm)	Max Air pressure (kpa)	Load capacity (kg)
31"10,50R15LT	109 S	81/2J	268	775	350	1030
LT215/85R16	110/107 S	6J	216	772	450	1060
LT225/75R16	115/112 S	6J	223	744	550	1215
LT235/85R16	120/116 S	61/2J	235	806	550	1400
LT245/75R16	120/116 S	7J	248	774	550	1380
LT265/75R16	123/120 S	71/2J	267	804	550	1550
LT245/75R17	121/118 S	7J	248	800	550	1450

THE WORLD IS YOUR PLAY GROUND

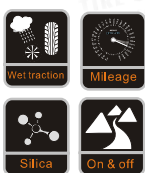
SUV/4X4 SERIES-AT

RU006 ALPINISM A/T



RU006

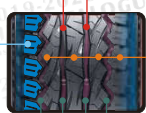
ALPINISM A/T



15.20 Inch
Speed rating: T-W
50-85 Series
UTQG: 500AA

• **Interleaving Shoulder Tread Pattern and Armor Sidewall**
Designed for exceptional control on wet and sandy road conditions, it effectively avoids wearing on demanding road condition.

• **3D Shoulder Design**
For exceptional control on wet and sandy road conditions, it can effectively avoid wearing on demanding road condition.



The main structure consists of two inner water expelling treads and two outer water expelling treads, providing excellent water expelling performance on mud and wet road condition.

• **Tiger-teeth Tread Pattern**
This pattern provides excellent grip with great mountain performance and off-road performance.

• **Special 3D Water Expelling Tread with Enhanced Structure**
It prevents stress-gathering effect and prevents pebbles from getting stuck in the tread.

RU006		ALPINISM A/T					
Size	Load index & speed Rating	Std. Rim	Section width (mm)	Overall diameter (mm)	Max Air pressure (Kpa)	Load capacity (kg)	PR
255/70R16	111T	71/2J	260	764	250	1090	
265/70R16	112S	8J	272	778	250	1120	
275/70R16	114S	8J	279	792	250	1180	
LT265/70R17	121/118S	8J	272	804	550	1450	10/E
LT285/70R17	121/118R	8 1/2J	292	832	550	1450	10/E
265/65R17	112S	8J	272	776	250	1120	
275/65R17	115S	8J	279	790	250	1215	
285/65R17	116S	8 1/2J	292	802	250	1250	
265/60R18	110H	8J	272	775	250	1060	
285/60R18	116H	8 1/2J	292	799	250	1250	
275/55R20	117/XLH	8 1/2J	284	810	290	1285	
265/50R20	111/XLV	8 1/2J	277	774	290	1090	
285/50R20	116/XLV	9J	297	794	290	1250	

★225/65R17. NEW PRODUCT AVAILABLE IN 2019

RU006		ALPINISM A/T					
Size	Load index & speed Rating	Std. Rim	Section width (mm)	Overall diameter (mm)	Max Air pressure (Kpa)	Load capacity (kg)	PR
30x9.50R15LT	104S	7 1/2J	240	750	350	900	6/C
31*10.50R15LT	109Q	8 1/2J	268	775	350	1030	6/C
215/75R15LT	100/97S	6J	216	703	350	800	6/C
LT235/85R16	120/116S	6 1/2J	235	806	550	1380	10/E
LT225/75R16	115/112S	6J	223	744	550	1215	10/E
LT245/75R16	108/104S	7J	248	774	350	1000	6/C
LT265/75R16	123/120S	7 1/2J	267	804	550	1550	10/E
LT285/75R16	126/123R	8J	286	834	550	1700	10/E
235/70R16	106S	7J	240	736	250	950	
245/70R16	111/XLT	7J	248	750	290	1090	

To be continued.....

ENJOY FREEDOM, DRIVE WITH NO BOUNDARY

RU007

CAVALIER A/T

SUV/4X4 SERIES-A/T

31-32



RU007

CAVALIER A/T

Big strong block pattern enhance off-road performance

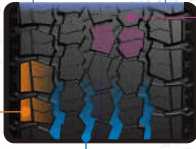
On & off

Wet traction

Mileage

Braking

15-17 Inch
Speed rating: Q-S
70-85 Series



- Special 3-D grooves and enhanced 4-ribs between blocks prevent stress concentration on tread and stone drilling.
- Central two wide grooves combine with two narrow grooves as main structure ensure great drainage performance on mud and wet road condition.
- 1. Variable pitch and armor sidewall design ensure muddy and sandy road handling, effectively prevent outside damage from terrible road condition driving;
2. 3-D fashion shoulder design dimensionize the tire out-looking, make the tire more fashion and beautiful.

RU007						ALPINISM A/T		
Size	Load Index & speed Rating	Std. Rim	Section width (mm)	Overall diameter (mm)	Max Air pressure (kpa)	Load capacity (kg)	PR	
LT235/75R15	104/101R	6½J	235	733	350	900/825	6/C	
31*10.50R15LT	109R	8½J	268	775	350	1030	6/C	
LT235/85R16	120/116R	6½J	235	806	550	1380/1260	10/E	
LT225/75R16	115/112S	6J	223	744	550	1215/1120	10/E	
LT245/75R16	120/116S	7J	248	774	550	1380/1260	10/E	
LT265/75R16	123/120R	7½J	267	804	550	1550/1400	10/E	
LT265/70R17	121/118S	8J	272	804	550	1450/1320	10/E	

To be continued.....

THE WORLD IS YOUR PLAYGROUND

SUV/4X4 SERIES- MT

RM105 ECO SENDERO M/T2



ECO SENDERO M/T2



Open shoulder design provides more powerful grip and traction.

Evenly distributed grooves provide excellent wet driving performance and braking performance.

Leading anti-wear compound reduces wear and longer life span.

RM105			ECO SENDERO M/T2				
Size	Load index & speed Rating	Std.Rim	Section width (mm)	Overall diameter(mm)	Max Air pressure(kpa)	Load capacity(kg)	PR
30x9.50R15LT	104Q	7½J	240	756	350	900	6/C
31"10.50R15LT	109Q	8½2J	268	781	350	1036	6/C
32x11.50R15LT	113Q	9J	290	807	350	1150	6/C
33x12.50R15LT	108Q	10J	318	832	250	1000	6/C
LT235/75R15	104/101S	6½2J	235	739	350	900	6/C
LT245/75R16	108/104Q	7J	248	780	350	1000	6/C
LT285/75R16	123/120Q	7½2J	267	810	550	1550	10/E

To be continued...

2019-2020
TIRE CATALOGUE
Passenger Car, SUV, Light Truck, Winter Tires

2019-2020
TIRE CATALOGUE
Passenger Car, SUV, Light Truck, Winter Tires

2019-2020
TIRE CATALOGUE
Passenger Car, SUV, Light Truck, Winter Tires

2019-2020
TIRE CATALOGUE
Passenger Car, SUV, Light Truck, Winter Tires

2019-2020
TIRE CATALOGUE
Passenger Car, SUV, Light Truck, Winter Tires

2019-2020
TIRE CATALOGUE
Passenger Car, SUV, Light Truck, Winter Tires

RIM105				ECO SENDERO M/T2			
Size	Load index & speed Rating	Std. Rim	Section width (mm)	Overall diameter (mm)	Max Air pressure (Kpa)	Load capacity (kg)	PR
LT285/75R16	126/123R	8J	286	840	550	1700	10/E
LT265/70R16	117/114Q	8J	272	784	450	1285	8/D
35x12.50R17LT	121Q	10J	318	883	450	1450	10/E
LT265/70R17	121/118Q	8J	272	810	550	1450	10/E
LT285/70R17	121/118R	8 1/2J	292	838	550	1450	10/E
LT295/70R17	121/118Q	8 1/2J	299	852	550	1320	10/E
LT265/65R17	120/117S	8J	272	782	550	1400	10/E
33x12.50R18LT	118Q	10J	318	832	450	1320	10/E
35x12.50R18LT	118Q	10J	318	883	350	1320	8/D
LT285/65R18	125/122S	8 1/2J	292	833	550	1650	10/E
33x12.50R20LT	114Q	10J	318	832	450	1180	10/E
35x12.50R20LT	121Q	10J	318	883	450	1450	10/E
37x13.50R20LT	127Q	11J	345	934	450	1750	10/E
LT275/65R20	126/123Q	8J	279	872	550	1700	10/E
33x12.50R22LT	109Q	10J	318	832	450	1030	10/E
35x12.50R22LT	117Q	10J	318	883	450	1285	10/E
37x13.50R22LT	123K	11J	345	934	450	1550	10/E
37x13.50R24LT	120Q	11J	345	934	450	1400	10/E

THE INTERNATIONAL TREND, NO-NAIL ENVIRONMENTAL SNOW TIRES

WINTER SERIES

RW611
WINTER-MAX U1



RW611

WINTER-MAX U1



Braking



Snow Traction



Grip

13-16 Inch
Speed rating: T-H
55-80 Series

Advanced piece-shape pattern design with special formula for ice and snow provides newly-developed tread with better flexibility and bigger ground area when tires are driven on a snowy road. Snow columns are not easy to be cut off, and tires can be provided with more powerful driving forces





More Balanced Performance
Symmetric pattern design and big shoulder pattern piece design, which can produce lateral forces when tires are driven, improve traction on snowy and icy roads. It significantly improves driving and braking performance, and optimizes driving precision on dry and wet roads to the maximum, more helpful to reduce driving noise

More Lasting Effect
Special formula for ice and snow can ensure that tires maintain a very good winter performance in the middle and late period of wearing

RW611		WINTER-MAX U1				
Size	Load Index & speed Rating	Std. Rim	Section width (mm)	Overall diameter (mm)	Max Air pressure (kpa)	Load capacity (kg)
155/80R13	79T	4 1/2J	157	578	240	437
155/70R13	75T	4 1/2J	157	548	250	387
165/70R13	79T	5J	170	562	250	437
175/70R13	82T	5J	177	576	250	475
165/70R14	81T	5J	170	588	250	462
175/70R14	84T	5J	177	602	250	500
185/70R14	88T	5 1/2J	189	616	250	560
175/65R14	82T	5J	177	584	250	475
185/65R14	86T	5 1/2J	189	596	250	530
185/60R14	82T	5 1/2J	189	578	250	475
185/55R14	80T	6J	194	560	250	450
185/65R15	88T	5 1/2J	189	621	250	560
195/65R15	91T	6J	189	635	250	615
205/65R15	94T	6J	201	647	250	670
215/65R15	96H	6 1/2J	209	661	250	710
195/60R15	88T	6J	221	615	250	560
185/55R15	86/XLH	6J	201	585	290	530
205/55R16	91T	6 1/2J	194	632	250	615

THE INTERNATIONAL TREND, NO-NAIL ENVIRONMENTAL SNOW TIRES

WINTER SERIES

RW211

WINTER-MAX A1



RW211

WINTER-MAX A1



15-19 Inch
Speed rating: H-V
40-55 Series



Drainage and Slip Resistance
Three longitudinal grooves designed on tread improve slip resistant performance on snowy roads in winter.

Herring Bone Patterns Providing Stronger Grip
Herring bone patterns on tread have strong ice breaking and water drainage performance, and big ground touching areas ensures the characteristics of tires on icy and snowy roads.

Better Operation and Control Performance
Asymmetric pattern design optimizes the performance of tires on dry and wet grounds, and improves comprehensive operation and control of tires on icy and snowy roads.

RW211		WINTER-MAX A1 ❄️				
Size	Load index & speed Rating	Std.Rim	Section width (mm)	Overall diameter(mm)	Max Air pressure(Kpa)	Load capacity(kg)
225/55R16	99/XLH	7J	233	654	290	775
215/55R17	98/XLV	7J	226	668	290	750
225/55R17	101/XLV	7J	233	680	290	825
235/55R17	103/XLV	7 1/2J	245	690	290	875
205/50R17	93/XLV	6 1/2J	214	638	290	650
215/50R17	95/XLV	7J	226	648	290	690
225/50R17	98/XLV	7J	233	658	290	750
225/45R17	94/XLV	7 1/2J	225	634	290	670
225/40R18	92/XLV	8J	230	637	290	630
235/40R18	95/XLV	8 1/2J	241	645	290	690
245/40R18	97/XLV	8 1/2J	248	653	290	730
255/40R19	100/XLV	9J	260	687	290	800

RW211		WINTER-MAX A1 ❄️				
Size	Load index & speed Rating	Std.Rim	Section width (mm)	Overall diameter(mm)	Max Air pressure(Kpa)	Load capacity(kg)
195/55R15	85H	6J	201	595	250	515
195/50R15	82H	6J	201	577	250	475
215/65R16	98H	6 1/2J	221	686	250	750
205/60R16	96/XLH	6J	209	652	290	710
215/60R16	99/XLH	6 1/2J	221	664	290	775
225/60R16	102/XLH	6 1/2J	228	676	290	850
235/60R16	100H	7J	240	688	250	800
195/55R16	87H	6J	201	620	250	545
205/55R16	91H	6 1/2J	214	632	250	615
215/55R16	97/XLH	7J	226	642	290	730

To be continued.....

SAFE RIDE ON SNOW AND ICE

RW312

WINTER CROSS

WINTER SERIES

41-42

2019-2020 TIRE CATALOGUE

2019-2020 TIRE CATALOGUE

2019-2020 TIRE CATALOGUE

2019-2020 TIRE CATALOGUE

2019-2020 TIRE CATALOGUE

RW312

WINTER CROSS

Wet Traction

Braking

Strong Grip

Inch: 13-19

Speed rating: Q-S

Series: 40-70

1 Excellent braking performance

2 Precise control

3 Strong grip

In the early stage of development, we optimized stress distribution on tire by FE simulation analysis. The actual footprint of tire shows that the stress distribution is uniform and the grounding area is increased, indicating the improved stability and safety of the tire when traveling on snowy and icy roads.

4 Upgraded technology

The Soft Tread formula and enhanced sidewall stiffness comprehensively improve the performance of tires on snowy and icy roads.

Soft Tread formula developed for winter tires:

Tread

Tread using Soft Tread formula

As shown in the above figure, the tread made using the Soft Tread formula provides greater ground area on snowy and icy roads than tread made using a harder tread formula.

Snowy and icy roads

Braking on icy roads

Braking on snowy road

Control on dry roads

Control on wet road

Control on snowy road

International brand B

International brand G

APTANY RW312

RW312

WINTER CROSS

Size	Load index & speed Rating	Std. Rim	Section width (mm)	Overall diameter (mm)	Max Air pressure (Kpa)	Load capacity (kg)
165/70R13	83/XLQ	5.00B/5J	170	562	340	487
175/70R13	82Q	5.00B/5J	177	576	300	475
175/70R14	88/XLQ	5.00B/5J	177	602	340	560
185/70R14	88Q	5J	189	616	300	560

To be continued.....

RW312

Size	Load index & speed Rating	Std. Rim	Section width (mm)	Overall diameter (mm)	Max Air pressure (Kpa)	Load capacity (kg)
175/65R14	82 Q	5,00B/5J	177	584	300	475
185/65R14	90/XLQ	5½J	189	596	340	600
185/60R14	82 Q	5½J	189	578	300	475
205/70R15	96 Q	6J	209	669	300	710
185/65R15	88 Q	5½J	189	621	300	560
195/65R15	91 Q	6J	201	635	300	615
205/65R15	94 Q	6J	209	647	300	670
185/60R15	84 Q	5½J	189	603	300	500
195/60R15	88 Q	6J	201	615	300	560
195/55R15	86XLQ	6J	194	585	340	530
195/55R15	85 Q	6J	201	595	300	515
215/70R16	100Q	6½J	221	708	300	800
205/65R16	95Q	6J	209	673	300	690
215/65R16	98 Q	6½J	221	686	300	750
205/60R16	92 Q	6J	209	652	300	630
215/60R16	98/XLQ	6½J	221	664	340	775
225/60R16	98 Q	6½J	228	676	300	750
205/55R16	91 S	6½J	214	632	300	615
215/55R16	97/XLQ	7J	226	642	340	730
225/55R16	99XLQ	7J	233	654	340	775
235/65R17	104 S	7J	240	738	300	900
215/60R17	96 S	6½J	221	698	300	710
225/60R17	103/XLS	6½J	228	702	340	875
215/55R17	94 S	7J	226	668	300	670
225/55R17	97S	7J	233	680	300	730
215/50R17	95/XLS	7J	226	648	340	690
225/50R17	98/XLS	7J	233	658	340	750
235/45R17	97/XLS	8J	236	644	340	730
225/60R18	104XLS	6½J	227	727	340	900
235/60R18	107XLS	7J	240	739	340	975
265/60R18	114XLS	8J	270	775	340	1180
215/55R18	98/XLS	7J	226	693	340	775
235/50R18	101/XLS	7½J	245	693	340	825
225/45R18	95/XLS	7½J	225	659	340	690
245/45R18	100XLS	8J	243	677	340	800
255/40R18	99XLS	9J	260	661	340	775
245/55R19	103 S	7½J	253	753	300	875

WINTER CROSS

SAFE RIDE&ALL ROUND PERFORMANCE



ALL SEASON SERIES

RC501

ALL SEASON versat



RC501

ALL SEASON versat



[Product Features]

Single directional pattern gives excellent stability at high speed, stronger snow expelling and water drainage performance.

Narrow Circumferential groove and wider contact surface help to enhance tire grip and safety on wet roads.

Massive quantity of transverse grooves strengthen performance in snow expelling, water drainage and other indexes including anti-wear, braking, controlling and noise.

Large quantity of tiny steel straps in the middle guarantee good performance on snow and small amount of steel design on the shoulder ensures excellent performance on dry and wet roads.

Double layer tread along with all season formula decreases rolling resistance, tire weight and optimizes performance on dry and wet roads.

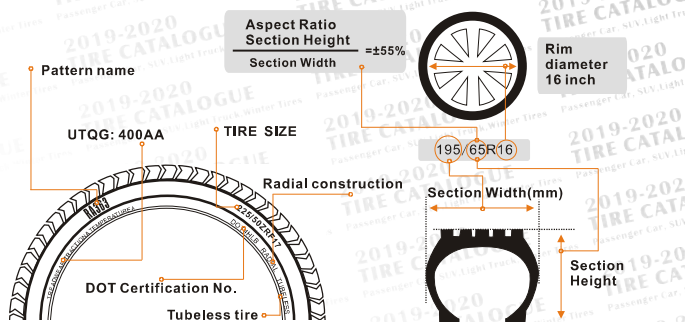
Low noise design is achieved by noise optimization software with regards to pitch misalignment and sequence.

NEW PATTERN DESIGNED FOR BALANCING PERFORMANCE AND QUIET DRIVING

RC501		ALL SEASON versat				
Size	Load Index & speed Rating	Std. Rim	Section width (mm)	Overall diameter (mm)	Max Air pressure (Kpa)	Load capacity (kg)
155/70R13	75T	41/2J	157	548	250	387
165/70R14	81T	5J	170	588	250	462
175/70R14	88/XLT	5J	177	602	290	560
175/65R14	82T	5J	177	584	250	475
175/65R15	84H	5J	177	609	250	500
185/65R15	85H	5 1/2J	189	621	250	560
195/65R15	86H	6J	201	635	290	690
185/60R15	87H	5 1/2J	189	603	290	560
195/60R15	88H	6J	201	615	250	560
185/55R15	89H	6J	194	585	290	530
205/60R16	90V	6J	209	652	290	710
195/55R16	91V	6J	201	620	290	615
205/55R16	92V	6 1/2J	214	632	250	615
225/45ZR17	93W	7 1/2J	225	634	290	670
225/40ZR18	94W	8J	230	637	290	630

*155/80R13, 155/65R14, 205/45R17, 205/50R17, 215/45R17, 215/50R17, 225/50R17, NEW PRODUCT AVAILABLE IN 2019

TECHNICAL FILE



Load Capacity Index

LI	KG	LI	KG	LI	KG	LI	KG
50	190	70	335	90	600	110	1060
51	195	71	345	91	615	111	1090
52	200	72	355	92	630	112	1120
53	206	73	365	93	650	113	1150
54	212	74	375	94	670	114	1180
55	218	75	387	95	690	115	1215
56	224	76	400	96	710	116	1250
57	230	77	412	97	730	117	1285
58	236	78	425	98	750	118	1320
59	243	79	437	99	775	119	1360
60	250	80	450	100	800	120	1400
61	257	81	462	101	825	121	1500
62	265	82	475	102	850	122	1450
63	272	83	487	103	875	123	1550
64	280	84	500	104	900	124	1600
65	290	85	515	105	925	125	1650
66	300	86	530	106	960	126	1700
67	307	87	545	107	975	127	1750
68	315	88	560	108	1000	128	1800
69	325	89	580	109	1030	129	1850
						130	1900

TIRE USAGE TIPS :

SPEED SYMBOLS

1. Tire Tread Depth

Change tyres before the tread depth is worn to 1.6mm. Make sure to regularly check the tread depth of tyres and replace them when they are worn. This will guarantee maximum traction and grip, helping avoid risk of aquaplaning and it will also affect the braking distance etc.

2. Tire Balancing

Tires should be balanced when they are mounted on wheels for the first time or when they are remounted after repair. Tire balance should be checked at the first sign of a vibration or shimmy. Unbalanced tires cause vibration, which can lead to driver fatigue, irregular and premature wear, as well as unnecessary wear to the vehicle's suspension.

3. Tire Pressure

Check the pressure of tyres, including the spare, monthly and before any long journey, preferably when tyres are cold. It is advisable to add 4-5psi to the pressure recommended by the vehicle manufacturer. Correct tyre pressure reduces the risk of losing control of your vehicle. It also protects your tyres from premature wear and irreversible damage to the internal construction. Tyre pressure can drop due to small perforations, the natural escape of air through the tyre's components or even from a decrease in ambient temperatures. So it is important to check it once a month.

4. Wheel Alignment

ENSURE SAFETY WITH CORRECTLY ALIGNED WHEELS AND AXLES.

A vehicle is properly aligned when all suspension and steering components are sound and when the tire and wheel assemblies are running straight and true. If you notice uneven tread wear, this could be due to a misalignment and must be serviced by a running straight and true. It's important to ensure correct alignment to get the best road handling, protect your tyres from irregular and/or rapid wear and save fuel.

5. Rear Tyres

For optimum efficiency, regularly check the pressure and condition of your tyres, especially during tyre rotation as many vehicles specify different pressure on the front and rear axle.

FOR COMPLETE CONTROL, FIT YOUR NEW TYRES TO THE REAR AXLE.

Rear wheels are not connected to your steering wheel, which makes it extremely difficult to judge their grip while driving. So for your safety, always fit new, or the least worn tyres to the rear wheel positions to ensure:

Better control in emergency braking or tight corners.

Less risk of losing control of your vehicle, especially on wet surfaces.

Better road holding, particularly in difficult situations, whether your car is front or rear wheel drive.

6. Tire Repair

Tire repairs should be carried out by a trained tire professional. Proper repair procedure will include dismounting the tire from the wheel for a thorough inspection to check for damage, and the use of a patch and plug to repair any punctures that fall within the limits and guidelines for repair.

7. Tire Rotation

While many people are capable of rotating their own tires, it is quick, easy and secure to let a professional do it for you. Your vehicle's owner's manual will specify the proper rotation pattern and schedule for your vehicle. If a specific schedule is not indicated, it is a good rule of thumb to rotate your tires every 8,000 to 10,000 kilometers.



speed symbol : U

Max Speed: 200 km/h